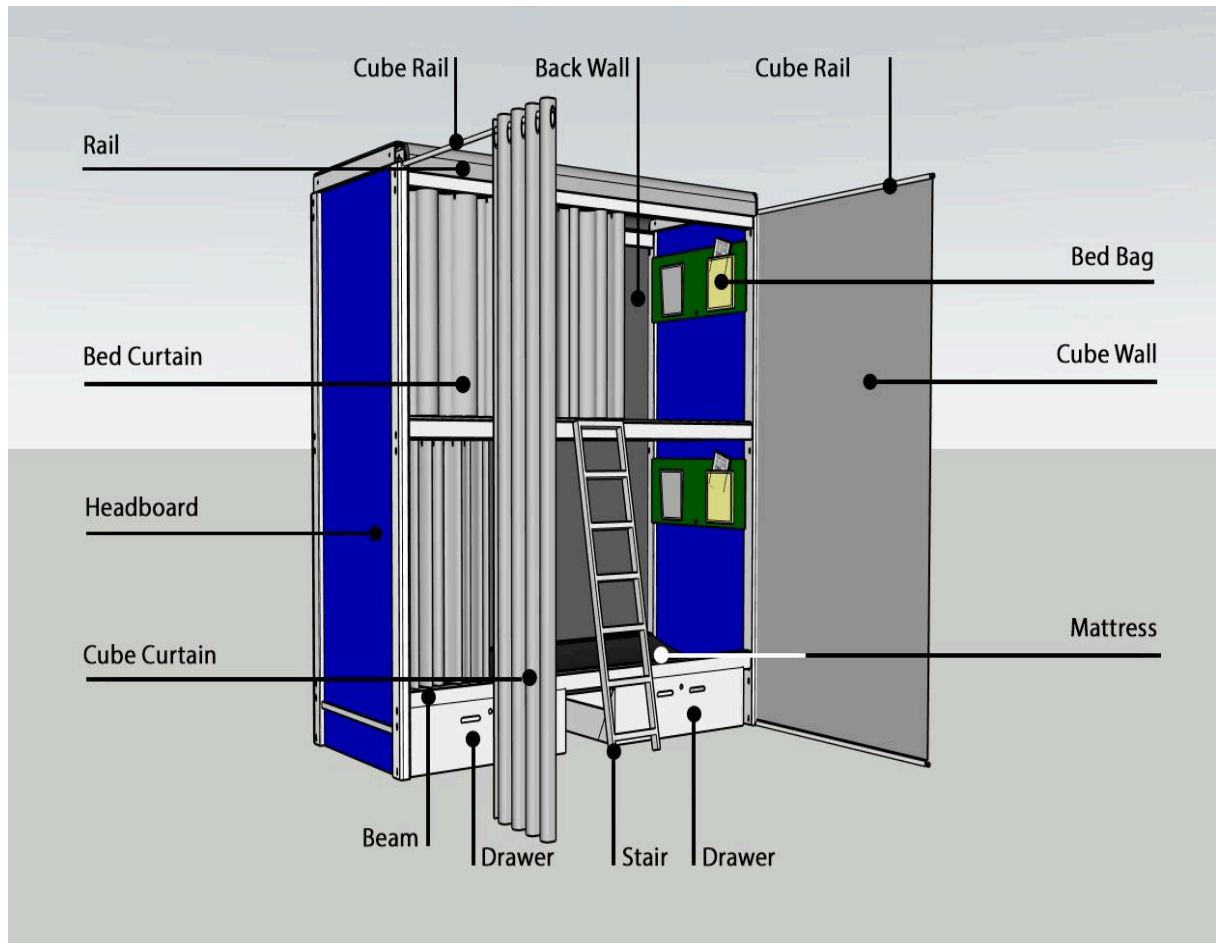


B-211b Assembly Bed-Stay Cube**1. Supplies**

- Special tools to replace broken plastic couplings.
- Plastic couplings
- Stairs
- Pallet trucks
- Work gloves and work shoes
- Tie wraps (300mm x 4.8mm)
- Rolls of white nichiban tape (low residue tape)

2. Method

- Before construction can begin, all employees must have watched the assembly instruction film and read these work instructions.
<https://www.youtube.com/watch?v=PSbACgdAiwk>
- All employees have been properly informed by the project manager about what needs to be built. A drawing and/or floor plan must be used for this.
- The pallet truck(s) can be used to place the crates and trestles in the right location so that there is not too much walking required.

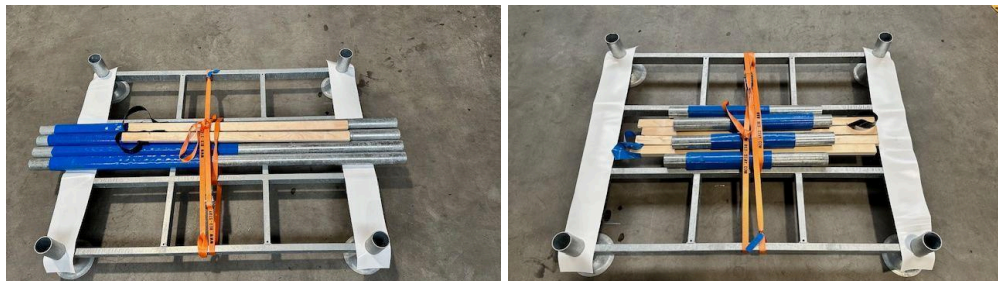
1. Place the first headboard in the right place and hold it.
 2. Your colleague now mounts 6 beams to the headboard.
 3. Now place the 2 mattresses in the beams with 2 people.*
 4. Take the next headboard and mount it to the 6 beams.
 5. Now mount the bed bags with tyraps.
 6. Slide the keder of the backwall in the profile opening at the top of the headboards with 2 people at the same time. Use a stepladder for this.
 7. When the backwall is completely in, slide the rail into the opening of the backwall at the top.
 8. Mount the bed curtains on a stepladder by sliding the keder into the headboard and the top runners on the beams that connect the headboards..
 9. Stick a piece of nichiban tape on the beam between the headboard and the first runner to stop the keder from falling out
 10. Now put the stairs in the profile of the beams
 11. Now take the drawers and slide them one by one under the bed.
 12. Mount the cube wall (+ zip) between both Bed-Stays by inserting the keder in both headboards from above and pulling them down. Use a stepladder for this. When the cube wall is in place, the cube rail can go through it at the top.
 13. Mount the cube curtain by inserting the keder from above into the headboard. Slide the cube rail through the eyes of the cube curtain and click the cube rail into both headboards.
- * If mattresses with bedboards are chosen, step 3 is omitted and you place the bedboard after step 4

3. Leave packaging behind

1. The project manager indicates the location where the empty packaging should be placed.
2. All empty crates must be provided with a lid and a tension strap around it.



3. Crates may be stacked up to a maximum of 3 high.
4. Empty stacking racks are stacked up to a maximum of 12.
5. Each stacking rack is equipped with its own stanchions, pieces of wood, anti-slip strips and a tension belt.



4. Damage and replacement of parts

- If there is damage to the plastic coupling at the end of the beam, this coupling should be replaced immediately.

5. Waste management

All waste produced during construction must be cleaned up and separated. Think of: Tie-wraps, foil, coffee cups, sandwich bags etc. Always walk a final round through the space where you worked to see if anything was left behind.